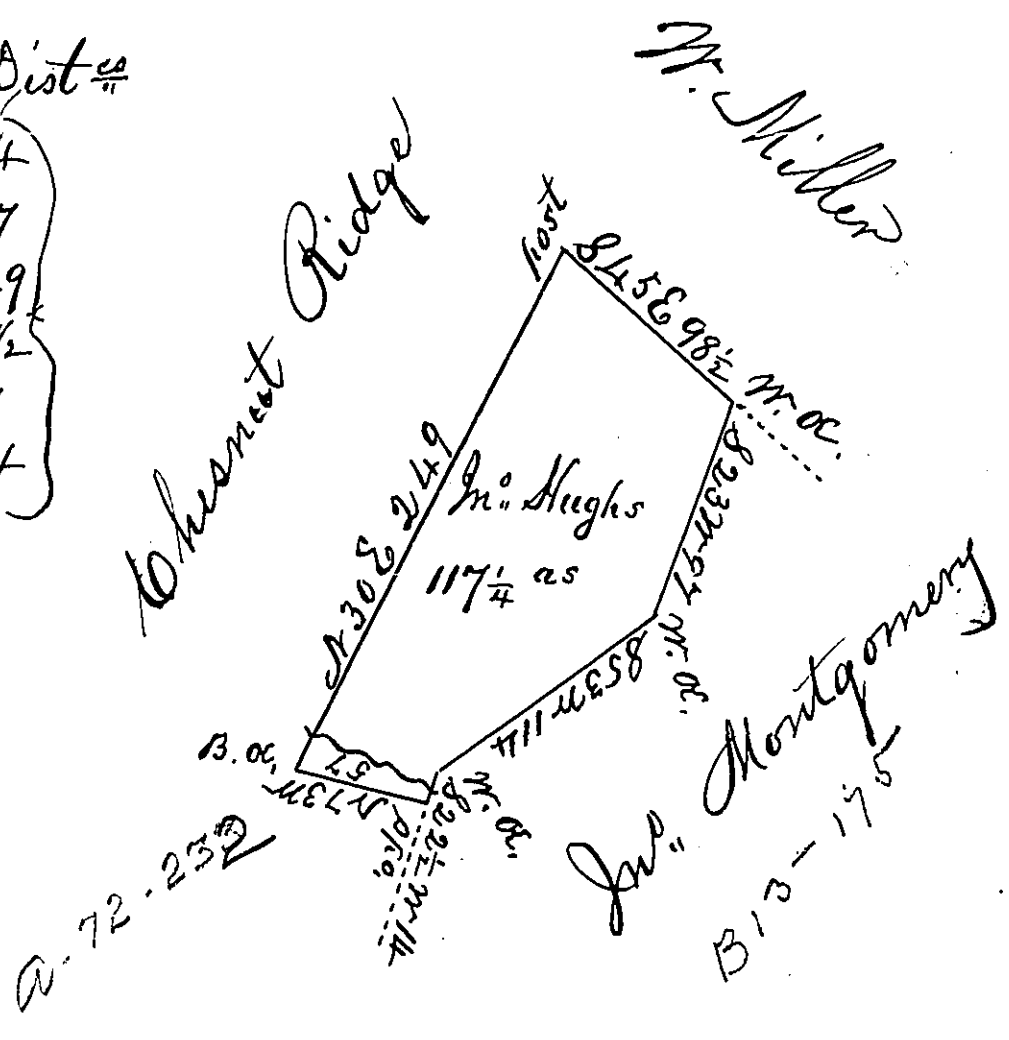


Courses & Dist^{cs}
 S 22 1/2 W 14
 N 73 W 57
 N 30 E 249
 S 45 E 98 1/2
 S 23 W 97
 S 58 W 114



A Draught of a tract of land situate in
 Kishacoquillis Valley, Cumberland County
 containing one hundred & fourteen acres
 & one fourth & the usual allowance of
 six per cent for roads &c, surveyed for
 John Hughes August the 20th 1784, in
 Pursuance of an Application No. 1956.
 Dated Nov^r 25th 1766,
 now Mifflin County
 Daniel Proakehead Esq,
 Surveyor Genl.

Jas Harris Esq.

IN TESTIMONY that the above is a copy of the original remaining on file in the
 Department of Internal Affairs of Pennsylvania, made con-
 formably to an Act of Assembly approved the 16th day of
 February, 1833, I have hereunto set my Hand and caused
 the Seal of said Department to be affixed at Harrisburg, this
 Twenty fifth day of July 1884.

J. Simpson Africa,
 Secretary of Internal Affairs